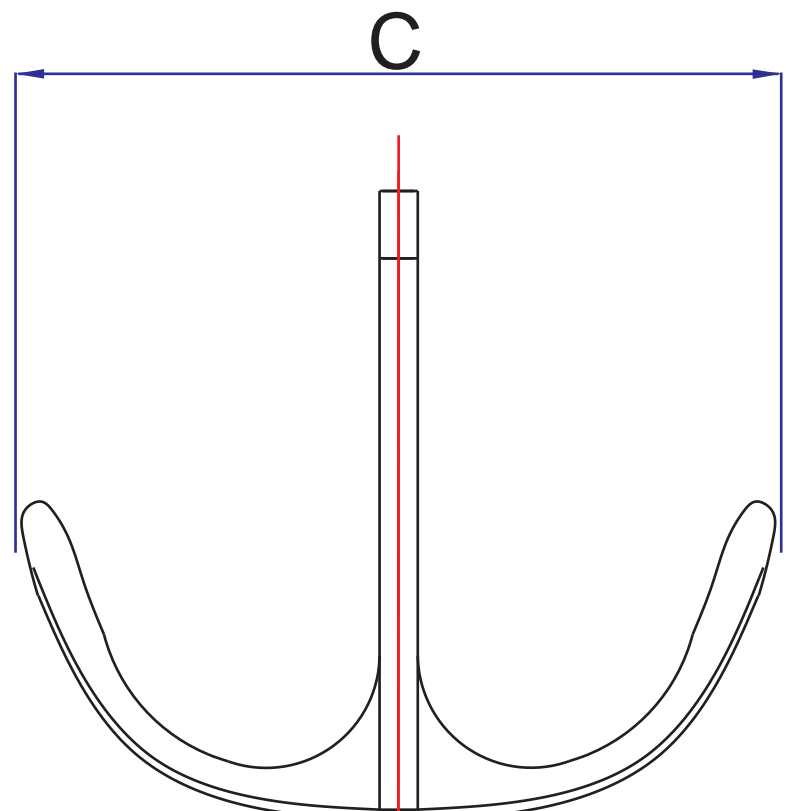
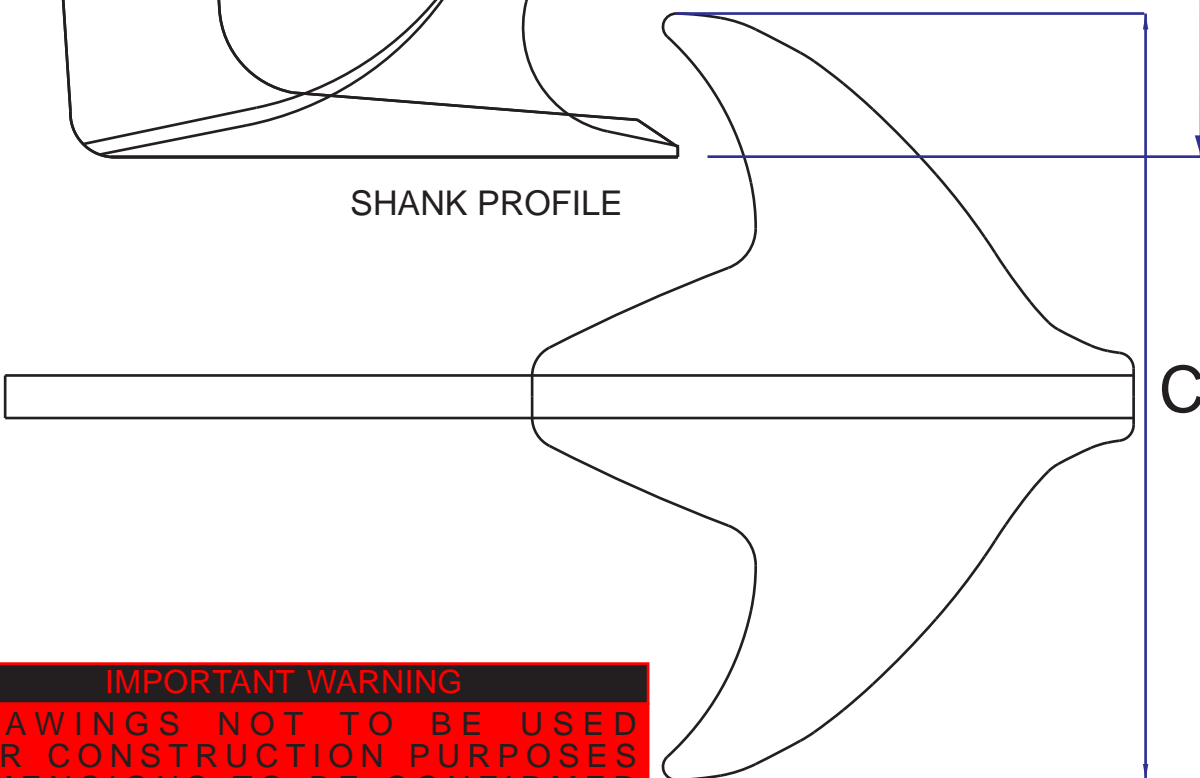


SHANK PROFILE



FLUKE PROFILE



PLAN VIEW

TABLE OF ANCHOR WEIGHTS AND MEASUREMENTS

All measurements in mm

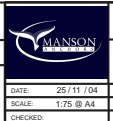
ANCHOR WEIGHT (KG)	A	B	C
10	570	320	390
15	680	380	445
20	710	400	465
25	710	400	465
35	810	455	540
40	860	485	590
50	935	525	640
80	1060	595	710
100	1135	635	775
120	1220	685	835
150	1350	695	890

CUSTOM SIZING AVAILABLE BETWEEN INCRIMENTS ABOVE

CUSTOM SIZING AVAILABLE UP TO 800KG (1760lbs)
PLEASE CONTACT FOR DIMENSIONS

IMPORTANT WARNING
DRAWINGS NOT TO BE USED FOR CONSTRUCTION PURPOSES
DIMENSIONS TO BE CONFIRMED BY MANSON BEFORE ORDERING

MATERIALS: PIN SAF 2205
STAINLESS STEEL 316L
DIMENSIONS in mm
tolerances +/- 0.3
unless otherwise stated



MANSON ANCHORS

RAY ANCHOR
FOR SIZING SEE TABLE

DATE: 25/11/04	DRAWN: Manson	SIZE: A4
SCALE: 1:75 @ A4	FILE: ANCHORS-00	SHEET: 1 of 1
CHECKED:	DWG No: Man-Gen	REVISION: 0